

Guidelines

BASTA Logbook

BASTA-Systemet
Version 10
2026-01-02

Table of Contents

Guidelines BASTA Logbook	0
Welcome to the BASTA Logbook	2
Set-up of the BASTA Logbook	3
Organization/user	3
Workspace	3
Project (logbook).....	4
The Logbook service at BASTA.....	4
User account at BASTA.....	4
My projects	4
Workspace	5
Manage workspaces	6
Help & support.....	6
Project (Logbook).....	7
Articles.....	7
Project details	14
Members.....	15
Export.....	16
Settings.....	17
Insights	18
Project (logbook) status	18
Manage deviations.....	19
Transfer a project (logbook)	20
Conditions for the transfer of a project (logbook).....	20
Initiate the transfer of a project (logbook)	20
Approve the transfer of a project (logbook).....	21
How is the Logbook service priced?.....	22

Welcome to the BASTA Logbook

The BASTA logbook is a digital tool available to e.g. property owners, property managers, contractors, and architects to document the articles used in new buildings, reconstructions, as well as during the maintenance of premises, buildings, and facilities.

The BASTA logbook is connected to BASTA's article database which contain environmentally evaluated articles regarding chemical content. The database provides the users with practical guidelines regarding the selection of safe and quality-assured articles. The articles in the BASTA article database meets different grades regarding the chemical composition, read more about the BASTA system at [BASTAonline](#).

The logbook enables:

- A systematic approach to the selection of articles
- A quality ensured control of articles to achieve non-toxic construction
- A meeting of the system requirements in the environmental certifications of buildings e.g. Miljöbyggnad, BREEAM-SE and LEED.

The logbook enables the user to:

- Administer articles connected to a project (logbook)
- Secure that an article meets the requirements of selected grade, e.g. the ALFA, BETA or DECLARED
- Get overall project (logbook) information through the insight feature
- Gain insight into the article distribution between grades in a project (logbook)
- Upload and save relevant product- and project documentation
- Create and manage deviations regarding article choice
- Check if an article has been used in multiple projects (logbooks) through the database search engine.

Set-up of the BASTA Logbook

The BASTA logbook consists of three levels: organization/user, workspace, and project (logbook). The logbook is administered in BASTA's web service that can be reached through our website.

Organization/user

The organization/user is the customer towards BASTA and is responsible for payment of the service.

Workspace

A workspace is a common space for a business to manage all projects (logbooks) and users. The workspace is connected to an organization/user. A workspace can "own" one or more projects (logbooks).

There are three kinds of workspaces:

- Organization Plus Workspace
- Organization Workspace
- Educational Workspace
- Personal Workspace

Organization Plus Workspace

In "Organization Plus Workspace", an organization can collect, administer and overview all its projects (logbooks) and its articles. The workspace can have up to 50 journals at a fixed price that are billed once a year. The workspace can have unlimited members and articles.

Organization Workspace

In the "Organization Workspace", an organization can collect, administer and overview all its projects (logbooks) and its articles. Fee is paid per logbook and for 12 months at a time. The workspace can have an unlimited number of projects (journals), members, and articles.

The user who creates the workspace will automatically be assigned the role "Super Admin" and will be able to invite more users to the workspace, as well as assign different roles to these users, for more information about the different roles see further below.

Educational Workspace

The "Educational Workspace" is aimed at schools and students wishing to use the BASTA logbook for an educational purpose.

Personal Workspace

The "Personal Workspace" is aimed at private users who within the workspace can create two projects (logbooks) with two users for each project (logbook). The purpose behind the workspace is to give a private user the means to document private projects, e.g. a house or extension. For a more advanced building log (including deviation management) a "Business Workspace" is required.

Project (logbook)

A project (logbook) is used to document the built-in articles in a building, as well as document and manage potential deviations from set requirements.

The Logbook service at BASTA

Below you will find a description of the different logbook functions.

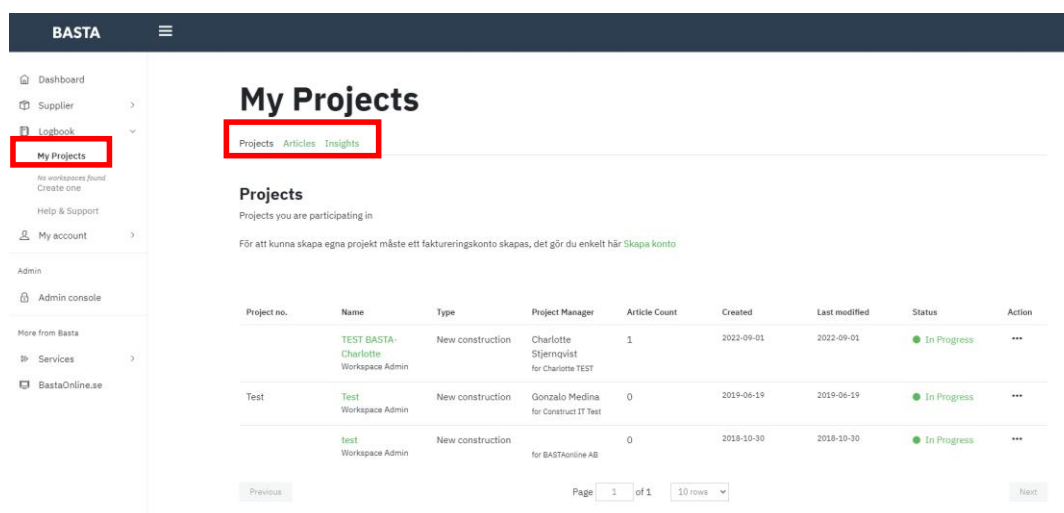
User account at BASTA

You need to create a user account to log into BASTA and use the logbook. Click on "LOG IN" on the BASTA website and choose "register".

My projects

The logbook tools are located under "Logbook" in the left menu.

An overview of all the projects where your user is added as a member can be found under "My projects", regardless of which workspace the project (logbook) belongs to.



Project no.	Name	Type	Project Manager	Article Count	Created	Last modified	Status	Action
	TEST BASTA-Charlotte Workspace Admin	New construction	Charlotte Stjernqvist for Charlotte TEST	1	2022-09-01	2022-09-01	In Progress	...
Test	Test Workspace Admin	New construction	Gonzalo Medina for Construct IT Test	0	2019-06-19	2019-06-19	In Progress	...
	test Workspace Admin	New construction	for BASTAonline AB	0	2018-10-30	2018-10-30	In Progress	...

On this page you will find three tabs:

- **Projects** – An overview of the projects (logbooks) where you are a member, including project information. Which workspace the project (logbook) belongs to is displayed in the column "Project Manager"
- **Articles** – An overview of all the articles added to the projects (logbooks) where you are a member. A quick search can be conducted here to determine whether a specific article has been used in any of the projects (logbooks) where you are a member
- **Insights** – An overview of statistics and trends of the projects where you are a member.

Workspace

You will find your workspace profile by clicking on "Business Workspace" in the left menu, under "Logbook".

BASTA

Dashboard
Supplier
Logbook
My Projects
Business Workspace
BASTAonline AB
Manage workspaces
Help & Support
My account
Admin
Admin console
More from Basta
Services
BastaOnline.se

WORKSPACE
BASTAonline AB

Profile Plan & Billing Settings Members Projects Articles Insights

Workspace Profile
Contact information for your workspace

Organization details

Organization name (Workspace name) Organization number
BASTAonline AB 556719-5697

Address Postal code
Box 21060 100 31

City Phone
Stockholm 08-598 563 00

Homepage
http://www.bastaonline.se
http:// or https://

On the workspace page you will find the following tabs:

- **Profile** – Manage the organizational details including the workspace name
- **Plan & Billing** – Manage payment plans and billing information
- **Settings** – Manage settings for how users can join the workspace and who should receive billing reminders
- **Members** – This is where workspace members are managed. You can invite new members as well as manage existing ones by clicking on "Action" (the pen to the right of each user)
- **Projects** – Here you can see all the workspace projects (logbooks). They can be opened by clicking on the green text in the "Name" column. In the "Manage" column, you can choose to create a copy of the project (the logbook), transfer ownership to another workspace or delete the project (the logbook) by clicking on the three dots.
- **Articles** – An overview of all the articles in the projects (logbooks) connected to the workspace. A quick search can be conducted here to determine whether a specific article has been used in any of the projects (logbooks) connected to the workspace
- **Insights** – An overview of statistics and trends of the projects belonging to the workspace.

Member roles in a workspace

Members of a workspace can be assigned one of the following roles:

Super Admin

This role gives the user complete administrative rights to the workspace, the role allows the user to:

- Create and remove projects (logbooks) on the workspace
- See and join any open projects (logbooks) on the workspace
- Administer the workspace members
- Administer the workspace profile
- Administer the workspace payment plans and billing information
- Transfer projects (logbooks) to another workspace

Admin

This role allows the user to:

- Create projects (logbooks) on the workspace
- See and join any open projects (logbooks) on the workspace
- Administer the workspace members
- Administer the workspace profile

Member

This role allows the user to:

- See and join any open projects (logbooks) on the workspace

Manage workspaces

Select which workspace you wish to manage if your user is a member of more than one workspace. Click on "Manage workspaces" in the left menu to select the preferred workspace – then click on "Business Workspace" again.

Help & support

Here you will find help and support regarding the logbook service.

Project (Logbook)

A project (logbook) is used to document which articles are being used in a construction project. Articles can be added by all the project's members and categorized by a preferred structure, project deviations are managed and insights about the project can be visualized. A project (logbook) is created within a workspace and on the project overview you will find information about which workspace it belongs to.

In a project (logbook) you will find the following tabs:

PROJECT

Test XX

WORKSPACE: BASTAonline AB

In Progress

ArticlesProject detailsMembersExportSettingsInsights

Articles

Pending deviations 0

Approved deviations 2

Unapproved deviations 3

Archived articles 1

Uncategorized articles 1

Project 38

- Fasad 3
- Platta 2
- Stomme 6
- Tak 5

Read more about what the symbols mean

ALPHABETADECLARED

ELECTRONICS

Project

Add articleNew folder

Project

Article	Company	Added	Grade
<input type="checkbox"/> Filter...	<input type="text" value="Filter..."/>	<input type="text" value="Filter..."/>	<input type="text" value="All"/>
<input type="checkbox"/> ALPHA G-lim S Asfaltklister Project BK04 Adhesive Article No 1006103	NCC Industry AB	2025-12-09 By Charlotte Stjernqvist	
<input type="checkbox"/> ALPHA Överkantshängt fönster 3-glas Trä 44 (EFÖO) Utåtgående Överkantshängt fönster 3-glas trä IMAGE eBVD PB EPD BVD OTHERIMGS Project BK04 Windows Article No 71300000111	Elitfönster AB	2025-11-18 By Pehr Hård	6 % 28 %
<input type="checkbox"/> ALPHA Cellplast S100 SUNDOLITT 600x1200x50 PP PD EPD BVD SDB eBVD PB Project BK04 Expanded foamed plastic Article No 11000050	Sundolitt AB	2025-09-25 By Charlotte Stjernqvist	

Articles

Under the tab "Articles" you will find an overview of all the articles added to the project (logbook).

Structure

The folders in the logbook are displayed in the left menu (if some of the folders are hidden in your project (logbook) it is because they are empty):

- **Pending deviations** – Shows added article deviations that have not yet been managed, for more information regarding deviations see further below
- **Approved deviations** – Shows added and approved article deviations

- **Unapproved deviations** – Shows added and not approved deviations
- **Archived articles** – Shows articles no longer in the project (logbook) that have been archived
- **Uncategorized articles** – Shows articles added to the project (logbook) that have not been placed in a specific "Project"-folder
- **Project** – The users can set up their own preferred structure to organize their added articles within this folder, e.g. by floors or rooms. New folders can be added by clicking on "New folder". To create a sub-folder open the folder meant to contain the sub-folder and add the new folder the same way. It is possible to change the name of, move, copy, or remove a folder if you select the folder and then click on "More" (top right corner).

Under "Project" all added articles in the project (logbook) can be seen to the right, depending on which folder that is selected. Initially all the added articles are shown.

Articles

Project details Members Export Settings Insights

Articles

Pending deviations 0
Approved deviations 2
Unapproved deviations 3
Archived articles 1
Uncategorized articles 1
Project 38
Fasad 3
Platta 2
Stomme 6
Tak 5

Read more about what the symbols mean

ALPHA BETA DECLARED
ELECTRONICS

Project

Add article New folder

Project

Article	Company	Added	Grade
<input type="checkbox"/> Filter... ALPHA G-tim 5 Asfaltklister Project BK04 Adhesive Article No 1006103	NCC Industry AB	2025-12-09 By Charlotte Stjernqvist	
<input type="checkbox"/> ALPHA Överkantshängt fönster 3-glas Trä 44 (EFÖÖ) Utåtgående Överkantshängt fönster 3-glas trä IMAGE eBVD PB EPD BVD OTHERIMGS Project BK04 Windows Article No 71300000111	Elitfönster AB	2025-11-18 By Pehr Hård	6 % 28 %
<input type="checkbox"/> ALPHA Cellplast S100 SUNDOLITT 600x1200x50 PP PD EPD BVD SDB eBVD PB Project BK04 Expanded foamed plastic Article No 11000050	Sundolitt AB	2025-09-25 By Charlotte Stjernqvist	
<input type="checkbox"/> ALPHA Oeftergivliga rörstolpar Z RS 3 108/60 Lucka 700 Project BK04 Outdoor lighting Article No 3RD01-01	AB Varmförzinkning	2025-06-11 By Charlotte Stjernqvist	

Add new articles

A new view will open when selecting "Add article", in this view it is possible to search for an article in the BASTA database as well as choosing the desired article. It is also possible to use the available filters in the left menu to find articles based on e.g. supplier or product name.

If you cannot find the desired article among the registered articles in the BASTA database, it is possible to add an unregistered article by searching in connected databases or by adding the article manually.

- "Search in CCBUILD database" – if you click here you get access to [CCBuilds](#) database of reusable products from the CCBUILD marketplace. Through an login you can also access an organizations internal marketplace.
- "Search Finfo database" – if you click here you get access to FINFOs database and can search for articles there and add them to the logbook, the basic information about the article is included, if further information is required you will then have to do a manual input.
- "Add unregistered article" – if you click here, you can add an article manually. For more information we refer to the section "Add unregistered article" further down in this document.

Add article

← Go back

Search CCBUILD database Search Finfo database Add unregistered article

Basta search

Reset 200728 resultat

Read more about what the symbols mean

ALPHA BETA DECLARED ELECTRONICS

CONNECTED COMPANIES

Find filter

Shows 5 of 459

Lindab AB 37750

Svenska Fönster AB 9340

Nordic Fastening Group AB 7172

Amico International AB 6830

Arvid Nilsson AB 6031

Show more

Article	Company
ALPHA TermoFuru BK04 Weatherboarding BSAB Synlig vägg- och takpanel samt lister utomhus Article No 772117	Moelven Wood AB
ALPHA TermoFuru BK04 Weatherboarding BSAB Synlig vägg- och takpanel samt lister utomhus Article No 772118	Moelven Wood AB
ALPHA TermoFuru BK04 Weatherboarding BSAB Synlig vägg- och takpanel samt lister utomhus Article No 769676	Moelven Wood AB
ALPHA TermoFuru BK04 Weatherboarding BSAB Synlig vägg- och takpanel samt lister utomhus Article No 771856	Moelven Wood AB

When adding an article to a project (logbook) a copy of the article is created with the information available in the moment the article was added to the project (logbook). When you have chosen an article to be added to the project (logbook) a new view appears.

Search tips

You can search for parts of words using an asterix (*).

- Example: paint* gives a hit on paint removal, paint products, etc.
- *color gives a hit on Wall and ceiling paint, paint, etc.

Article information

The top section of the new view describes the article.

Add: TermoFuru



Article details ^

BK04	02201 Weatherboarding
BSAB	HSD.16 Synlig vägg- och takpanel samt lister utomhus
GRADE	ALPHA
DOES NOT FULFILL CRITERION	—
COMPANY	Moelven Wood AB
BRAND NAME	Moelven Wood AB
SPECIFICATION	TermoFuru 21x118 Special
DESCRIPTION	Furu som värmebehandlas får nya och bättre egenskaper i form av bra rötskydd och formstabilitet. TermoFuru är valet för dig som vill handla klimatsmart och samtidigt dra nytta av egenskaper som står emot yttre påfrestningar.
GTIN	7040437721171
RSK	—
E-NUMBER	—
LCA DOCUMENTATION	—
CIRCULARITY	0
RENEWABILITY	<ul style="list-style-type: none">100%
LINK	Read more at BASTAonline.se

Company information v

Technical information v

Table of Contents eBVD v

Add deviation

Add deviation

In this section it is possible to add a deviation. Deviations is a tool for marking articles that does not meet the organization's set criteria. Deviations must be approved by a user of the project (logbook) with the role of project manager. Added deviations are shown in the folder structure described above.

If a user clicks on "Add deviation" the following view appears:

Deviation

Title ?	Deviation ?
<input type="text"/>	<input type="text"/>
Reason ?	Justification ?
<input type="text"/>	<input type="text"/>
<input type="checkbox"/> Has attached document	
<input type="button" value="Save deviation"/>	<input type="button" value="Cancel"/>

- **Title** – Name the deviation
- **Deviation** – Describe the deviation
Example: The organization requires all added articles to meet the grade ALPHA, but I need to add an article that only meet the BETA
- **Reason** – Reason why the article should be handled as a deviation
Example: There is no articles in this category that meet the grade ALPHA
- **Justification** – Justify why the Project Admin should approve this deviation
Example: There is no available articles that fulfil the grade ALPHA in the required category, and we need this kind of product for the next step of the project, therefor we need this deviation to be approved
- **Has attached document** – highlights that a document has been uploaded under "Document" in the bottom of the article view

Manage deviations:

- **Add new deviations** – All members of a project (logbook) with the role of Project Member or Project Admin can create a new deviation
- **Approve deviations** – Only the members of a project (logbook) with the role of Project Admin can approve deviations
- **Remove deviations** - Only the members of a project (logbook) with the role of Project Admin can remove deviations

Project details

Information about placement in construction, amount, total weight etc. can be added in this section. It is also in this section you can choose which folder the article should be placed into, more information about this is available earlier in this document.

Project details

Add to folder

Project

This project doesn't contain any folders

Status

Active

Placement in construction

Characters remaining :255

Floor

Characters remaining :50

Room

Characters remaining :50

Component

Characters remaining :50

Amount

Total amount

Choose unit...

Total weight (kg)

For statistical purposes please estimate the weight in kilograms (kg).

Other

Notes

Characters remaining :255

Documents

The last section handles documents, this is where previously uploaded documents can be found as well as the option to add further documents if needed.

Documents

Attachments

Choose File

Filename	Type
 Hernia PVP Variant SE.pdf	SDB
 30860470_Hernia-PVP-Variant_1L_P0269.jpg	PP
 8374934.pdf	SDB
 8374933.pdf	PB

Add unregistered article

If you cannot find a desired article in the BASTA database (registered articles) there is two available ways to manually input an unregistered article instead:

1. Conduct a search in the FINFO database "Search Finfo database". Basic information about the article is included when adding an article through the FINFO database
2. Add the article manually "Add unregistered article". When choosing this option all the article information must be put in manually and all required fields must be filled out.

Under the section "Requirements" it is possible to state whether the article is approved by another certification system or has an ecolabel. The information declared in this section will also be visible in the logbook's overview.

On the right there is a screenshot of the information requested when an unregistered article is added.

Add unregistered article



Add deviation

Article name * (Required field)

Roofing paint

Characters remaining: 37

Supplier * (Required field)

Test-Paint

Characters remaining: 40

Article No

123456

Characters remaining: 44

GTIN

1234567891011

Characters remaining: 0

Description

Roofing paint for outdoor use

Group code

Group code (BK04) * (Required field)

03403

✓ 03403 Roofing paint, outdoors ✕

BSAB

Search

Requirements

The article fulfills the following requirements:

☐ Byggarubedömningen

Rating

☐ Sunda Hus

Rating

☐ Svanen

Rating

☐ Other, specify below

Rating

Specify

Characters remaining: 50

Cancel

Add article

Project details

This section includes basic information about the project. By changing the project status in this section it is possible to archive the project (logbook). When a project (logbook) is archived, it is locked down and it is no longer possible to adjust any of the included articles.

From this view it is possible to choose whether the FINFO database should be accessible when searching for new articles and/or information from eBVD (digital product declarations) can be accessed.

[Articles](#) [Project details](#) [Members](#) [Export](#) [Settings](#) [Insights](#)

Project details

Project status

In Progress

Project name

Stockholmsprojektet 2

Project no.

01259632

Building

Trastvägen

Property name

1:725

Object

Project type

New construction

Description

Attachments

Choose File

Addons

- ☒ Byggsvarudeklaration - eBVD 0 SEK per year (included)
Access to digital building product declaration eBVD

eBVD

- ☒ Finfo 0 SEK per year
Access to articles and documentation from Finfo

FINFO
Information in control

- ☒ CCBuild 0 SEK per year
Access to articles and documentation from CCBuild

Centrum för
CIRKULÄRT
BYGGGANDE

Members

This section contains the current members, the possibility to invite new members, see status on project invites that has been made, and perform actions (click on the pen icon in the column "Action"). Actions available are "Change role" and "Remove member".

[Articles](#) [Project details](#) [Members](#) [Export](#) [Settings](#) [Insights](#)

Members

Invite member

Name	Role	Organization	Status	Action
Paulina Rode-Kemlo paulina.rodekemlo@ivl.se	Project Member	Basta	Pending	
Charlotte Stjernqvist Charlotte.Stjernqvist@ivl.se	Project Admin		Confirmed	
Pehr Hård pehr.hard@ivl.se	Project Admin		Pending	

Previous

Page 1 of 1

20 rows

Next

Member roles within a project (logbook)

A user can have one of the following roles in a project (logbook):

Project Admin

This role gives the user complete administrative rights to the project (logbook), the role allows the user to:

- View, modify, and remove articles
- Administer project members and project details
- Manage deviations

Project member

This role allows the user to:

- View, modify, and remove articles

Project Guest

This role allows the user to:

- Only view articles

Invite new project members

Only users with a Project Admin role can invite new members to the project (logbook).

Export

It is possible to create exports of the project (logbook) in this section. There are several different versions of exports.

Excel format

There are three different versions:

- One that exports all articles including the information that has been added to the article, for example weight, place in the building, deviations and more. Information about Miljöbyggnad Council and the Taxonomy is also included in this export
- One that exports all articles in a format that simplifies the import to [Byggsektorns miljöberäkningsverktyg](#) (BM). The columns are adapted and labeled to include information from the logbook has to BM for further data processing
- One that exports all articles in a format that simplifies the import to PRODIKTs climate calculation tool. The columns are adapted and labeled to include information from the logbook has to PRODIKT for further data processing

Website (HTML format)

This is a more advanced export format. An export is started by clicking on "Create new export". The user then gets to choose which parts of the project (logbook) that are to be exported. The user can export project information an documentation, article information and documentation, members, insights and more. The exports (zip-files) will be automatically deleted from the project (logbook) after 30 days.

PROJECT

Test XX

WORKSPACE: BASTAonline AB

In Progress

ArticlesProject detailsMembersExportSettingsInsights

Export

The contents of the log book can be exported in two formats:

Excel format

Download a list of articles that can be processed in Microsoft Excel

Export - Excel

Download a list of articles that can be imported into the Construction sector's environmental calculation tool (BM)

Export - BM Excel

Download a list of articles that can be imported into PRODIKT

Export - ProdiKT Excel

Website (HTML format)

For the documents to work you need to extract the zip-file. Exports will be automatically deleted after 30 days.

Create new export

Name	Created	Status	Action
<div>Basta export - Test XX - 2024-03-26_11-47-18.zip</div> <div>Contains: Members, Articles, Archived articles, Project documents, Articles documents</div>	2024-03-26	Completed	...
<div>Basta export - Test XX - 2024-01-11_18-06-05.zip</div> <div>Contains: Members, Articles, Archived articles, Project documents, Articles documents</div>	2024-01-11	Completed	...
<div>Basta export - Test XX - 2022-08-11_09-22-34.zip</div> <div>Contains: Members, Articles, Articles documents</div>	2022-08-11	Completed	...

Settings

This section manages settings regarding invitations of new members. There are three available options:

- **Invitation only** – New members must be invited
- **Discoverable and open to any user in the organization** - Discoverable projects are visible and can be joined by any workspace member
- **Discoverable, but open only after Project Manager's approval** - Discoverable projects are visible and can be joined by any workspace member but must be approved by a project manager.

PROJECT

TEST BASTA-Charlotte

WORKSPACE: BASTAonline AB

● In Progress

[Articles](#) [Project details](#) [Members](#) [Export](#) [Settings](#) [Insights](#)

Settings

Signup mode

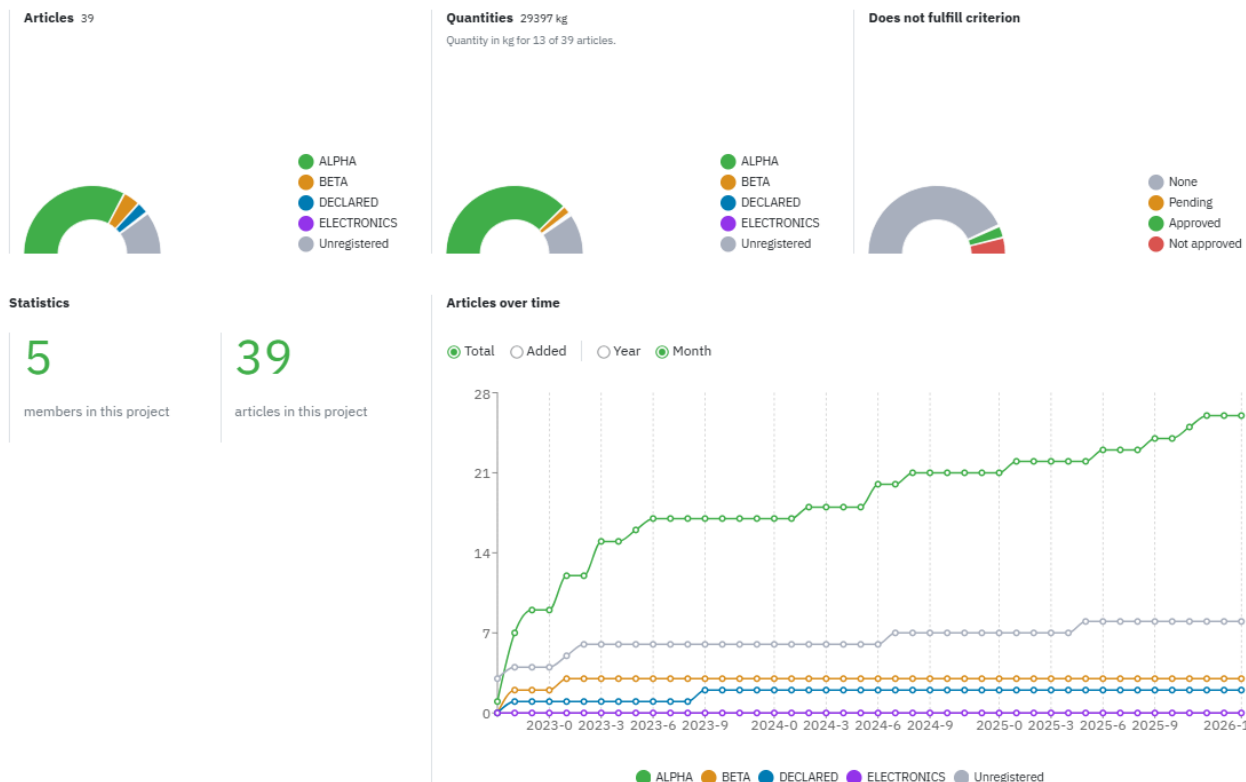
☒ Invitation Only
New members must be invited.

☐ Discoverable and open to any user in the organization
Discoverable projects are visible and can be joined by any Workspace member.

☐ Discoverable, but open only after Project Manager's approval
Discoverable projects are visible and can be joined by any Workspace member but must be approved by a Project Manager.

Insights

Project members can in this section view insights (statistics) about articles in the project (logbook). The distribution between articles that fulfil the grades ALPHA, BETA, DECLARED etc., quantities of articles, deviations and so forth.



Project (logbook) status

The project (logbook) can have one of the following statuses:

- **In progress** – The status that the project (logbook) automatically gets when it is created. The members of a project (logbook) with this status can modify articles and documentation, depending on their role in the project (logbook)
- **Archived** – The members of an archived project (logbook) can no longer modify anything within the project (logbook)
- **Suspended** – If the workspace that the project (logbook) belongs to have been archived, all the projects (logbooks) attached to the workspace will be suspended. The members of a suspended project (logbook) will no longer have access to the project (logbook).

Manage deviations

If a deviation is added to an article an e-mail, containing the information that a deviation is waiting to be managed will be sent out to members of the project (logbook) with the role of Project Admin. For more information on how to add a deviation please see the section "Add deviation" further up in this document. Not yet managed deviations can also be seen in the folder "Pending deviations" in the "Articles"-section.

Open the concerned article and scroll down to the section "Deviation" to manage the deviation. This section also shows who the deviation was added by, and any information provided, as well as an opportunity to leave a comment about why the deviation is approved or not approved.

Deviation

Added by Charlotte Stjernqvist **PENDING**

Title ⓘ

Test11

Deviation ⓘ

No documentation about chemical content

Reason ⓘ

Not possible to get information from the supplier

Justification ⓘ

Only available choice



Has attached document

Comment ⓘ

✕ Delete deviation

Approved

Not approved

- **Delete deviation** – If a deviation is deleted it will be removed from the article, this cannot be regretted
- **Approved** – If a deviation is approved the article will appear in the folder "Approved deviations"
- **Not approved** – If a deviation is not approved the article will appear in the folder "Unapproved deviations".

Transfer a project (logbook)

It is possible to transfer project ownership from one workspace to another. This can be relevant if e.g. a building has been sold.

Conditions for the transfer of a project (logbook)

The following requirements must be met to perform a project (logbook) transfer:

1. The user who initiates the transfer of the project (logbook) must have the role of Super Admin on the workspace to which the project (logbook) belongs
2. The user who receives the transferred project (logbook) must have the role of Super Admin on the workspace to which the project (logbook) is being transferred.

Initiate the transfer of a project (logbook)

To start the transfer of a project (logbook) the following steps will have to be performed:

1. Go to the section "Projects" in the workspace
2. Click on the three dots in the column "Action" by the project (logbook) that is to be transferred
3. Add the E-mail to the user that is to receive the project (logbook) and then click on "Transfer ownership".

WORKSPACE

BASTAonline AB

[Profile](#) [Plan & Billing](#) [Settings](#) [Members](#) [Projects](#) [Articles](#) [Insights](#)

Projects

Projects belonging to this workspace.

Project no.	Name	Type	Project Admin	Article Count	Created	Last Modified	Status	Action
	TEST BASTA-Charlotte Workspace Admin	Other	Charlotte Stjernqvist for BASTAonline AB	2	2022-08-31	2022-09-14	In Progress	...
	Test XX Workspace Admin	New construction	Pehr Hård for BASTAonline AB	0	2022-06-17	2022-08-11	In Progress	...
5489494	Testprojekt - Möte - 2022-05 Workspace Admin	New construction	Pehr Hård for BASTAonline AB	11	2022-05-23	2022-08-29	In Progress	...

The first step of the transfer is now complete. The receiving user will now have to confirm the transfer. After a user has initiated a transfer the status of the transfer can be seen by opening the section "My projects". The project (logbook) will appear under the new headline "Sent transfer request". From this view it is possible to cancel the transfer by clicking on the three dots in the column "Action" and then choose "Cancel transfer".

Sent transfer request

Project no.	Name	To	E-mail	Sent	Status	Action
	Copy of TEST BASTA-Charlotte	Pehr Hård	pehr.hard@ivl.se	2022-09-14	Pending	...

Previous Page 1 of 1 20 rows Next

Approve the transfer of a project (logbook)

To approve the transfer of a project (logbook) the following steps will have to be performed:

1. The receiving user goes to the section "My projects" in the left menu
2. The transferred project (logbook) will appear under the headline "Transfer request", the receiving user can open the transfer by clicking on the three dots in the column "Action" and then choose "Open transfer".

The screenshot shows the 'My Projects' section in a web application. On the left is a sidebar menu with options: Dashboard, Supplier, Logbook, My Projects (highlighted), Business workspace, BASTAonline AB, Manage workspaces, Help & Support, My Account, and Admin. The main content area is titled 'My Projects' and has tabs for 'Projects', 'Articles', and 'Insights'. Under the 'Projects' tab, there is a 'Transfer request' section. It contains a table with the following data:

Project no.	Name	From	E-mail	Received	Status	Action
	Test inbjudan	Charlotte Stjernqvist	Charlotte.Stjernqvist@vsl.se	2022-09-14	Pending	<div><div>Open transfer</div><div>Decline</div></div>

Below the table, there is a 'Previous' button and a pagination control showing 'Page 1 of 1' and '20 rows'.

3. A new window now opens where information regarding the project (logbook) is displayed. If you are a member of more than one workspace you can choose which of your workspaces the project (logbook) should be transferred to. In the bottom right corner you can approve or decline the transfer of the project (logbook).

Transfer request

From Charlotte Stjernqvist Charlotte.Stjernqvist@vsl.se

Project name	Project no.
Test inbjudan	
Building	Property name
Object	Project type
	New construction
Number of articles	Project status
1	In Progress
Description	
Documentation	

You have more than one workspace

Please select workspace

BASTAonline AB

By accepting, the ownership of this project will be transferred to your workspace.
Notice that this may affect the billing fees of your workspace.

Cancel

Decline

Accept

When these steps have been performed the project (logbook) will be transferred to the receiving user's workspace.

N.B.! The existing members of the project (logbook) and their project roles will remain after the completed transfer of the project (logbook) to the new workspace. When the transfer is completed the administrators of the new workspace can remove or replace the project's (logbook's) members and roles.

How is the Logbook service priced?

The cost for using the logbook is based on:

- Which kind of workspace you have selected for your projects (logbooks)
- The number of projects (logbooks) in your workspace
- The projects (logbooks) statuses

For workspace "Organization Plus" a fixed annual fee is paid, but for "Organization" you pay per logbook and year. Please see the BASTA webpage for further details, [Logbook service | BASTA \(bastaonline.se\)](https://bastaonline.se).